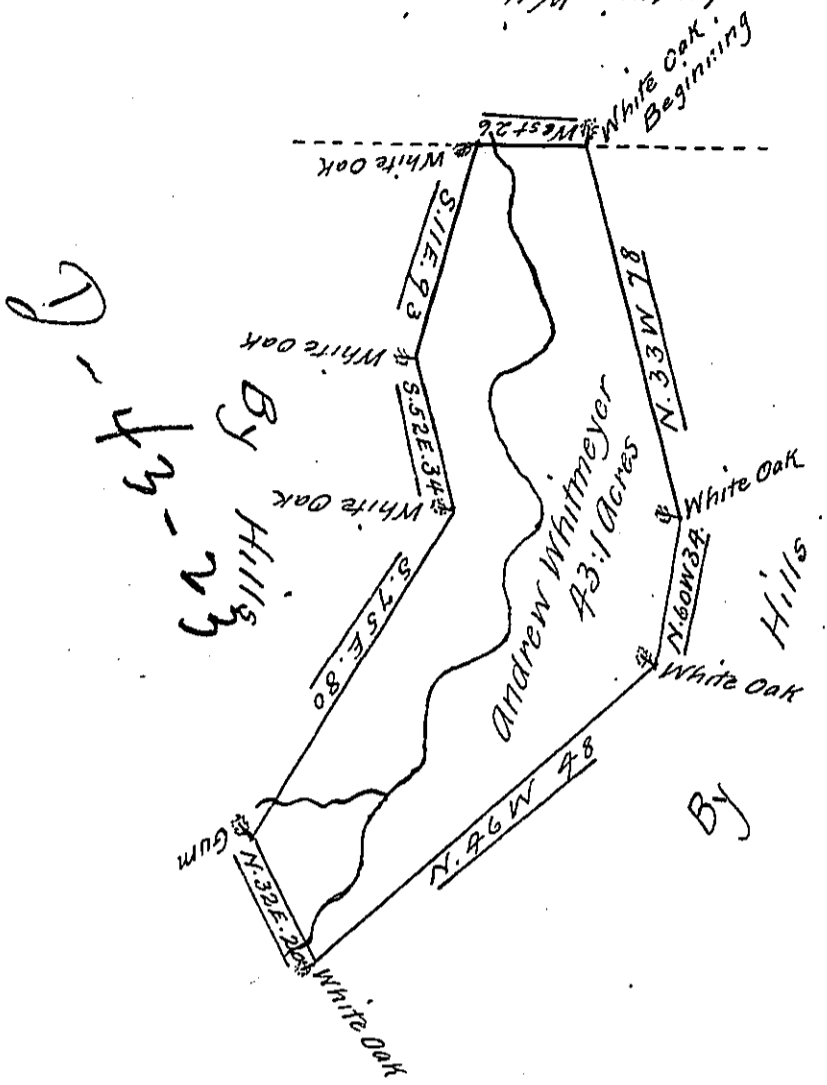


E-4  
Ludwig Wittemire



The Draught of a Tract of Land Called \_\_\_\_\_ Situate in Penns Township  
 In the County of Northumberland; Containing Forty three Acres and  
 32 perches with the usual Allowance of Six Acres per Cent for Roads  
 &c, Surveyd For Andrew Whitmeyer the 6<sup>th</sup> Day of April Anno  
 Dom: 1775. In Pursuance of a Warrant Bearing date at  
 Philadelphia the 5<sup>th</sup> day of April Anno Dom: 1774  
 P Wm Maclay

To John Lukens Esqr S.G. }  
 of Pennsylvania }

IN TESTIMONY that the above is a copy of the original remaining on file in  
 the Department of Internal Affairs of Pennsylvania, made  
 conformably to an Act of Assembly approved the 16th day of  
 February, 1833, I have hereunto set my Hand and caused  
 the Seal of said Department to be affixed at Harrisburg,  
 this Twenty Ninth day of June 1910

*Henry Houck*  
 Secretary of Internal Affairs.